

ERASMUS

**Jan Perner Transport Faculty
University of Pardubice**

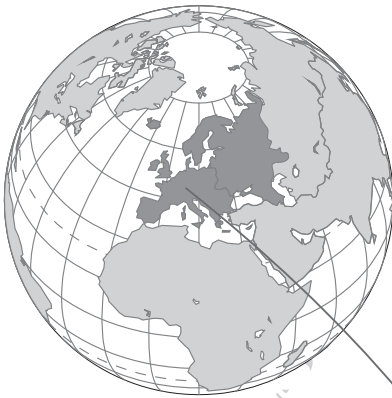


University
of Pardubice
Jan Perner
Transport Faculty

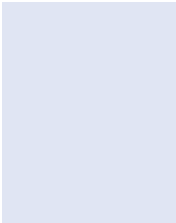
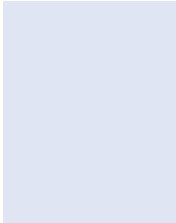
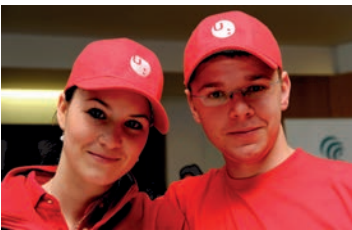


Table of Contents:

Map.	3
What do we offer you?	4
About the city of Pardubice.	5
The University of Pardubice	6
Jan Perner Transport Faculty	7
Department of Transport Management, Marketing and Logistics	8
Department of Transport Means and Diagnostics	9
Department of Electrical and Electronic Engineering and Signalling in Transport	10
Department of Informatics in Transport	11
Department of Transport Technology and Control.	12
Department of Mechanics, Materials, and Machine Parts	13
Introduction to the studies	14
Buddy System.	15
Application	16
Vocabulary.	17



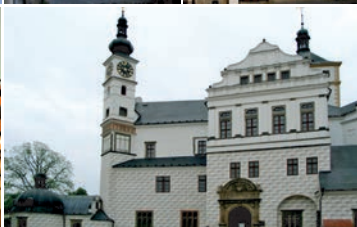
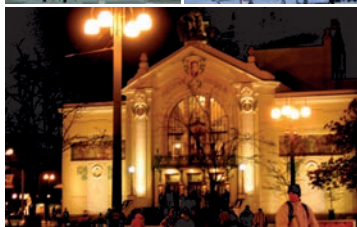
What do we offer you?





About the city of Pardubice

- **Historical centre** – Renaissance square, picturesque streets, dominant feature – the Green Gate, protected city heritage site since 1964
- **Pardubice castle** – Renaissance style
- **Culture** – East Bohemian Theatre, Museum, Gallery etc.
- **Sports:**
 - Ice-hockey – top-league since the season 1950/51
 - Horses – Big Pardubice Steeplechase
 - Motorcycles – Golden Helmet



The University of Pardubice

The University of Pardubice has been extending a sixty year long tradition of higher education in the town. The Chemical College, later known for 40 years as the Institute of Chemical Technology, was founded in Pardubice in 1950 to answer the needs of the East-Bohemian region, which had a highly developed chemical industry, yet lacked professionally trained specialists in this field. After 1990, the character of the Institute changed, new faculties were founded offering a wide range of study programmes, not only chemistry-related. Since 1994, the new name – the University of Pardubice – has been used.

Today the University of Pardubice is a modern and dynamic public higher education institution, one of 26 in the Czech Republic, and the only higher university-type educational institution in the Pardubice Region. It has 7 faculties and 1 institute with over 10 thousand students in 60 undergraduate or postgraduate study programmes and more than 130 study specializations. It broadens the universal scale of scientific disciplines, and creates an open international community.



Jan Perner Transport Faculty

Jan Perner Transport Faculty, named after a renowned 19th century railway engineer, began its activity in 1993. Today it is conceived as an institution of a multi-disciplinary character with economic-technological and technical specialization throughout the field of transport. It trains specialists for private and state transportation companies, electrotechnical, automobile and railway manufacturers, construction and business firms, research and project organizations, the public and education sector. These specialists are eligible to expertly engineer, organize and control technological processes in transport and postal systems, effectively communicate with customers and governing bodies, carry out acquisition, transportation, business and forwarding activities, ensure operation, maintenance, and renewal of road and railway transport means and infrastructure and investigate their influence on the environment, create computer information networks for traffic control, build electrical systems for safe road and railway traffic etc. The faculty participates in various projects from basic and applied research not only in the domestic field, but also in the field of international cooperation.



University
of Pardubice
Jan Perner
Transport Faculty

Department of Transport Management, Marketing and Logistics

The Department of Transport Management, Marketing, and Logistics prepares students mainly for economic and organizational management of transport undertaking and organizations specializing in railway, road, and air transport. It also teaches communication between transporters and customers and solving related problems.

No	Subject	ECTS	Level of Studies	Term
1	Logistic Management I	5	B, M, D	W/S
2	Economy and Management of Postal Services	5	B, M, D	W/S
3	Insurance	4	M	S
4	Management of Travel Bureaus	4	M	W
5	Pricing in Transport	5	B, M, D	W
6	Transport Policy	6	B, M, D	W
7	Logistic Management II	5	B, M, D	S
8	Leadership	4	B, M, D	S
9	Logistics	4	B, M	W/S
10	Air Transport Management	4	B, M, D	W
11	Transport Safety and Accident Investigation	5	B, M	W
12	Reverse Logistic	4	M, D	S

Legend:

- B – Bachelor degree
- M – Master degree
- D – PhD studies
- W – Winter semester
- S – Summer semester



Department of Transport Means and Diagnostics

The Transport Means branch focuses on engineering, construction, and operation of transport means, especially rail and road vehicles. The Department of Transport Means consists of 3 sections: Section of Rail Vehicles, Section of Road Vehicles, and Section of Environmental Protection in Transport.

No	Subject	ECTS	Level of Studies	Term
1	CAD I	4	B, M, D	W
2	CAD II	3	B, M, D	W
3	Maintenance and Repair of Piston Engines	4	B, M	W/S
4	The Selected Parts of Construction of Driving Railway Vehicles	3	B, M, D	W/S
5	Piston Internal Combustion Engines	6	B, M	W/S
6	CAD III	5	B, M, D	S
7	Bases of Transport Technologies	4	B	S
8	Theory of Vehicles	6	M, D	W
9	Theory of Maintenance	5	M	S
10	Dynamic Strength and Service Life	6	M	S
11	Computing Methods in Design	5	M	W
12	Interaction of Railway Vehicle and Track	6	D	S
13	Thermodynamics	4	B, M	S

Legend:

- B – Bachelor degree
- M – Master degree
- D – PhD studies
- W – Winter semester
- S – Summer semester



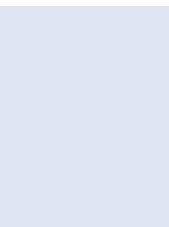
Department of Electrical and Electronic Engineering and Signalling in Transport

The department of electrical and electronic engineering and signalling in transport deals mainly with electric and electronic equipment connected with transport and communication. Electrical tradition, electric railway feeding, signalling equipment and systems, communication equipment and systems are the major objectives of the department's focus.

No	Subject	ECTS	Level of Studies	Term
1	RF and Microwaves	5	B, M, D	W
2	Electrical Drives	5	B, M, D	W
3	Electromagnetics	5	B, M, D	W
4	Electrical Engineering	5	B, M, D	W/S
5	Power Electronics	4	B, M, D	W/S
6	Power Engineering	5	B, M, D	W/S
7	Principles of Electrical Engineering	3	B	W/S
8	Computer Science	5	B, M	W/S
9	Introduction to Electronics	3	B	W/S
10	Traction System	4	B, M, D	W/S
11	Electrical Machines	4	B, M, D	S
12	Electromagnetic Compatibility	5	B, M	S

Legend:

- B – Bachelor degree
- M – Master degree
- D – PhD studies
- W – Winter semester
- S – Summer semester



Department of Informatics in Transport

The study program is aimed towards educating professionals capable of realizing and operating information systems and their modules for the support of controlling, information and administrative activities.

No	Subject	ECTS	Level of Studies	Term
1	Building of Web-pages	4	B	W/S
2	Operational Research	4	B	W/S
3	Theory of Probability and Statistics	5	B	W/S
4	Introduction to Computers	5	B	W/S
5	Decision Making Situation – modelling	5	B, M, D	W/S
6	Database and Presentation Systems	4	B	S
7	Graph Theory	4	B	S
8	Programming of Operation Research Methods	4	B	S
9	Algorithm Development and Programming	6	B	W/S
10	Numerical Methods Using Matlab	6	B, M, D	S
11	Applied Mathematics	6	M, D	W
12	Computer Technology	5	M	W
13	Statistical Software	2	M	W/S

Legend:

- B – Bachelor degree
- M – Master degree
- D – PhD studies
- W – Winter semester
- S – Summer semester



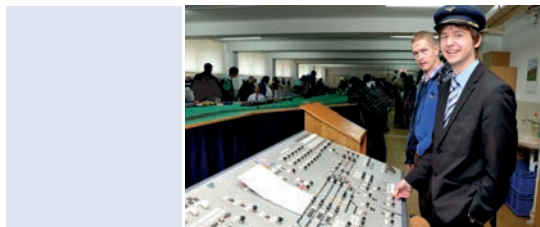
Department of Transport Technology and Control

The department stipulates the study branch of Transport Technology and Control in a bachelor, master and doctoral study. Not only research activity, but also counselling and expert activity is provided for institutions and organizations in the field of transport and logistic technologies.

No	Subject	ECTS	Level of Studies	Term
1	Principles of Transport Techniques and Control	5	B	W
2	Theory of Transport I	6	M, D	W
3	Transport Modelling I	5	B, M, D	W
4	Transport Technology and Control I	6	B, M, D	W
5	Air Traffic Rules	5	B, M, D	W/S
6	Techniques and Control in Railway Transport	4	B	W/S
7	Cargo Transportation	4	B, M, D	W/S
8	Theory of Transport II	6	B, M, D	S
9	Transport Technology and Control II	6	B, M, D	S
10	Transport Modelling II	5	B, M, D	S
11	Logistics Centres	4	B, M, D	S

Legend:

- B – Bachelor degree
- M – Master degree
- D – PhD studies
- W – Winter semester
- S – Summer semester



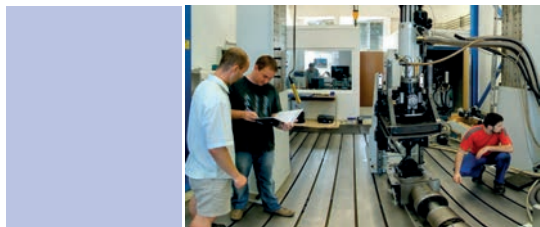
Department of Mechanics, Materials, and Machine Parts

Department of Mechanics, Materials and Machine Parts deals with the development of scientific knowledge of material engineering, Finite Element Method (FEM), mechanics of materials, reliability and diagnostics of materials. The knowledge is mainly applied to transport means and transport structures.

No	Subject	ECTS	Level of Studies	Term
1	Mechanics of Materials I	4	B, M, D	W
2	Reliability and Diagnostics	4	B, M, D	W/S
3	Finite Element Method I	4	B, M, D	W/S
4	Finite Element Method II	4	B, M, D	W/S
5	Corrosion and Surface Treatment	4	B, M, D	W/S
6	Mechanics	5	B	W/S
7	Mechanics of Materials 2	6	B, M, D	S
9	Engineering Technologies in Railway / Road Transport	4	B, M	S
10	Limit States of Materials	4	D	S
11	Materials Engineering	5	M	S
12	Thin-walled Shell Structures in Transport Technology	5	M, D	W/S

Legend:

- B – Bachelor degree
- M – Master degree
- D – PhD studies
- W – Winter semester
- S – Summer semester



Introduction to the Studies

- Academic year – two semesters; the winter semester starts in October, the summer semester in February

Holidays at the Czech Universities	
Christmas holidays	21 st December – 2 nd January
Summer holidays	See the academic calendar
Bank holidays in the Czech Republic	
New Years Day	1 st January
Easter Sunday and Monday	Usually in April
May Day	1 st May
Liberation from Nazism	8 th May
St Cyril and Methodius, the Slavonic missionaries	5 th July
Jan Hus Day	6 th July
Day of Czech Statehood	28 th September
Day of establishment of the Czech State	28 th October
Day of Students' Fight for Freedom and Democracy	17 th November
Christmas holiday	24 th – 26 th December

Czech grade	Definition	ECTS grade
1	Excellent	A
2	Very good	B
3	Good	C
4	Failed	D



- Accommodation – Halls of Residence of the University of Pardubice consist of 9 buildings, 7 of them are within the main University campus.
- Student ID card – used for catering services in the dining room; lending services in the University library, printing and copying services

Buddy system



Each Erasmus student gets assigned to a “buddy” – a Czech student of the University of Pardubice who is ready to provide help and assistance with various issues (arranging transport to Pardubice, getting to know the campus and town, dealing with Czech authorities etc.). The Buddy system team also organizes many cultural, social, and sports events throughout the year.





You need

- 1) *Nomination letter sent by the coordinator of your institution*
- 2) *Online application form*
- 3) *Learning Agreement*
- 4) *Application for the student ID card*
- 5) *Application for Orientation Week*
- 6) *Copy of your ID card or passport*

Deadlines for sending Application forms		
Semester	Erasmus students	Exchange students who need visa
Winter	30 th June 2013	15 th May 2013
Summer	30 th November 2013	15 th October 2013



University
of Pardubice
Jan Perner
Transport Faculty

Mgr. Andrea Pilařová
Institutional Erasmus Coordinator
e-mail: andrea.pilarova@upce.cz
Website: <http://www.upce.cz/en/studium/erasmus-incoming.html>

Vocabulary

Useful phrases

Czech

Dobré ráno

Dobrý den

Dobrý večer

Ahoj

Děkuju

Prosím

Nashledanou

Ano

Ne

English

Good morning

Good day

Good evening

Hello

Thank you

Please

Goodbye

Yes

No

Other

Czech

Zkouška

Knihovna

Pošta

Lékárna

Nemocnice

Vlak

Hlavní nádraží

Autobus

WC, toaleta

English

Exam

Library

Post office

Pharmacy

Hospital

Train

Main station

Bus

Toilet

Food and drinks

Czech

Oběd

Snídaně

Večeře

Voda

Pivo

Víno

Chleba

Ovoce

Džus

Zelenina

Mléko

Maso

English

Lunch

Breakfast

Dinner

Water

Beer

Wine

Bread

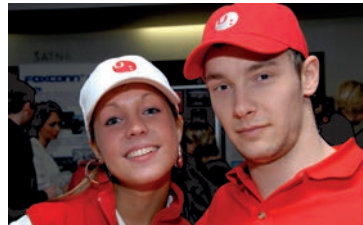
Fruit

Juice

Vegetable

Milk

Meat





*PhDr. Olga Blažková
Faculty Erasmus Coordinator
phone: +420 466 036 654
e-mail: olga.blazkova@upce.cz*

*Mgr. Andrea Pilařová
Institutional Erasmus Coordinator
phone: +420 466 036 725
e-mail: andrea.pilarova@upce.cz*

Website: <http://www.upce.cz/en/dfjp/index.html>

*Address
Studentská 95
532 10 Pardubice 2
Czech Republic*

